

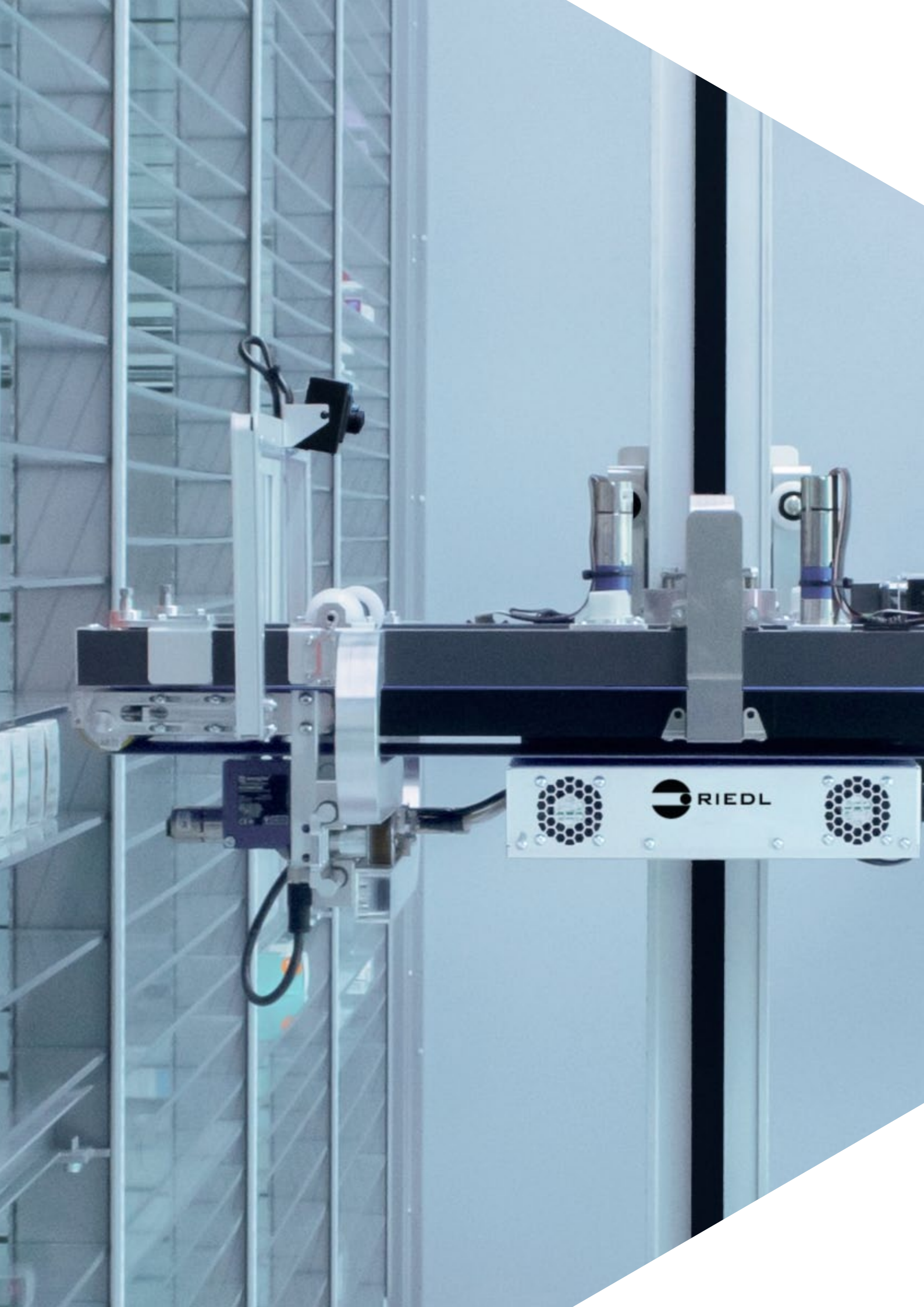
[www.clover51.co.uk](http://www.clover51.co.uk)

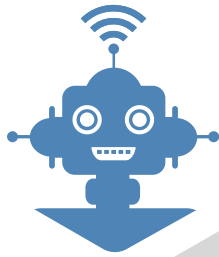


# RIEDL Phasys

Sophisticated Simplicity in Automation







# Wireless.

**RIEDL Phasys** robotic systems use Wireless technology. The connection between the gripping unit and the rest of the system is through a dedicated Wi-Fi network: the freedom of movement of the robot offers several advantages in terms of higher speed, greater reliability and system flexibility.



# Efficient.

**RIEDL Phasys** uses less than half a kw/h and does not require changes to the electrical system.

This is possible thanks to the low friction between gripping unit and the cabinet power running rails (absence of cables and reduced weight of the gripping unit). The KERS<sup>1</sup> recovers the braking energy to be reused in acceleration.

---

<sup>1</sup> KERS = Kinetic Energy Recovery System







# Fast.

The **RIEDL Phasys** gripping unit moves at an industry leading speed of 5 meters per second.

Due to the bidirectional multipicking gripping unit (both in loading and in unloading), the system performs at unrivalled levels of excellence.

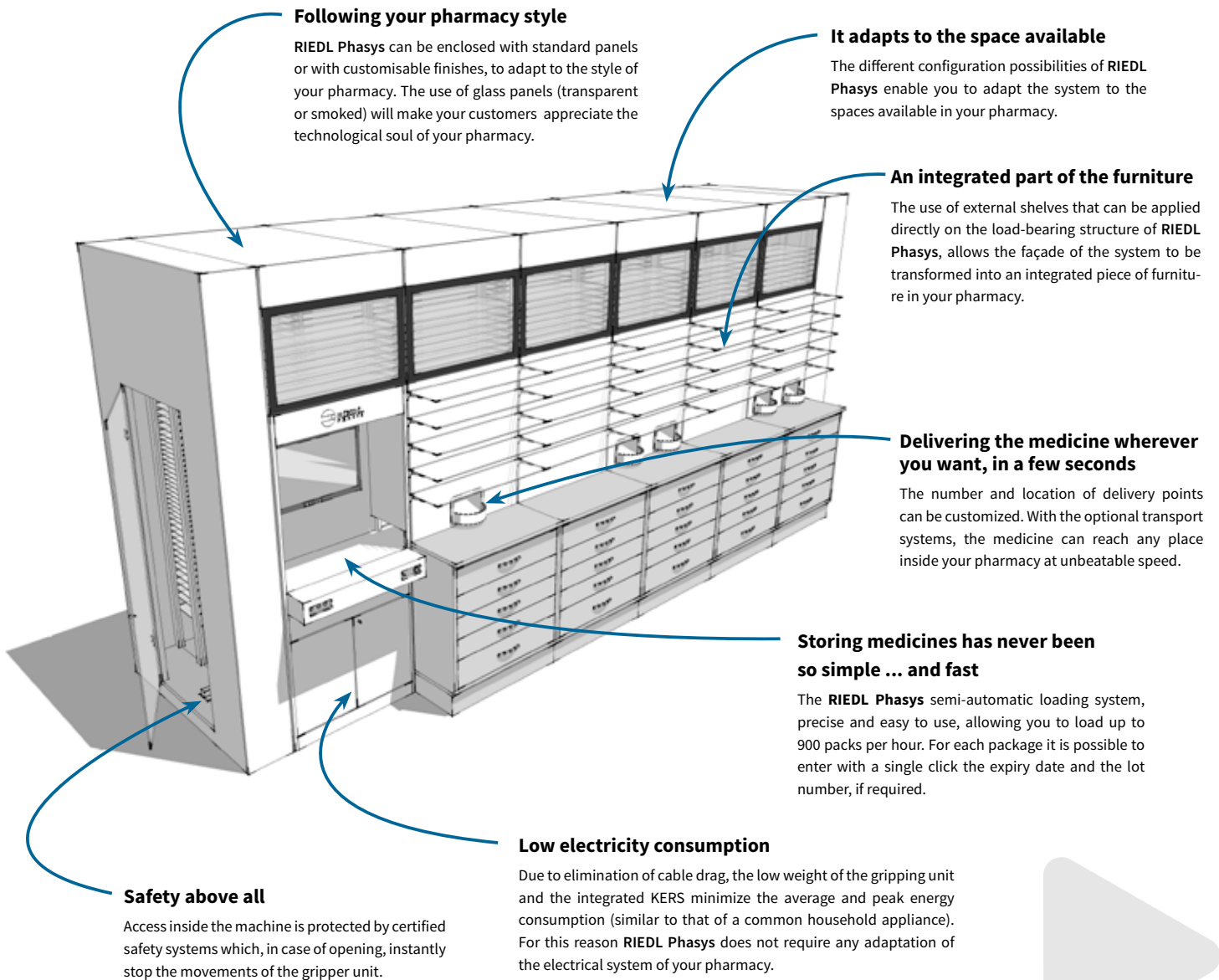


# Flexible.

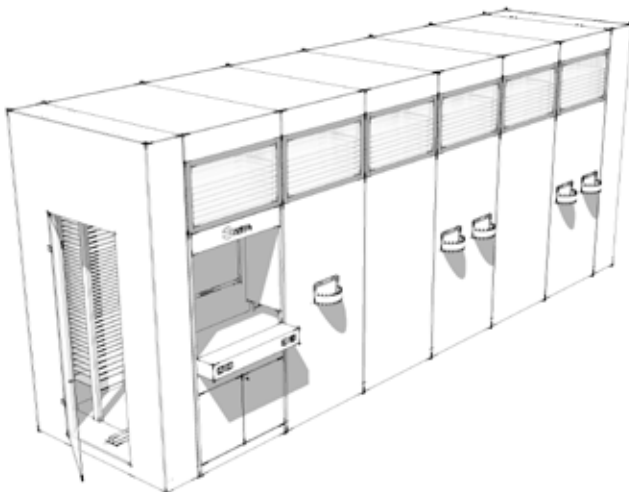
Each **RIEDL Phasys** is built according to the needs of the customer: available space (above, below or adjacent to the dispensary), daily throughput, number of counters, required storage and business processes are considered. Customisable colours and glass exterior panels make each **RIEDL Phasys** unique.



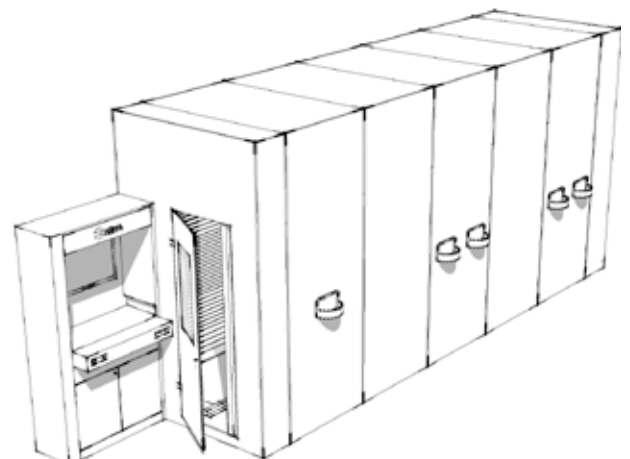




## Layout



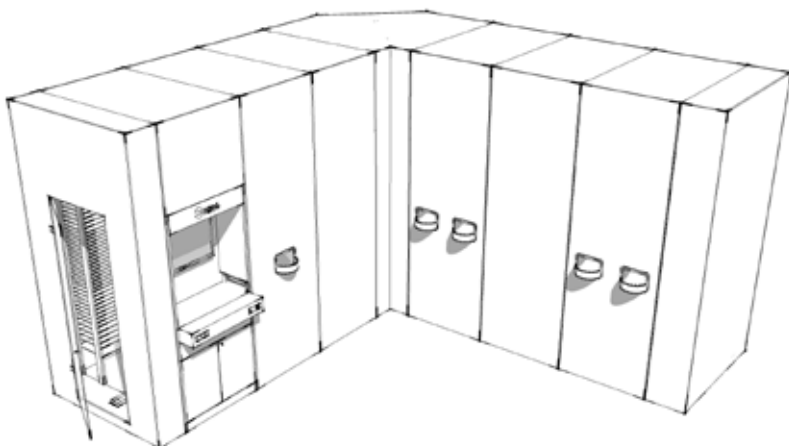
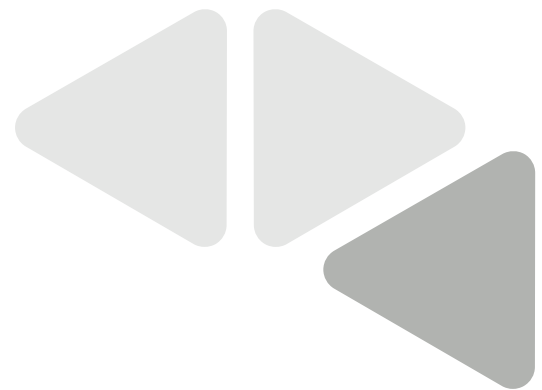
I - Shape



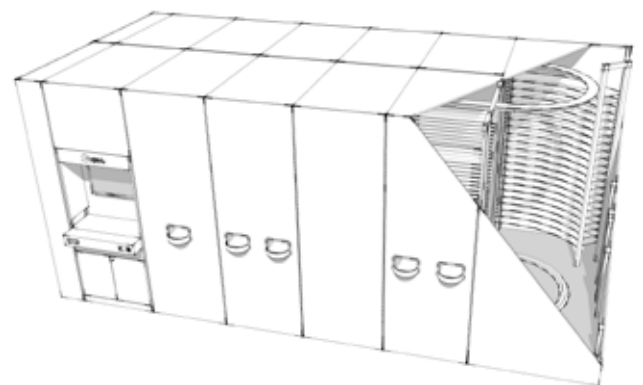
External loading module

# Datasheet

<b>Dimensions</b>	Width	1,606 mm / 63.23 Inch
	Height	from 2,219 mm/ 87.36 in to 3,519 mm/ 138.54 in (pitch 100 mm/ 3.94 in)
	Length	from 3,768 mm/ 148.34 in, no maximum limit
<b>Performance</b>	Semi-automatic loading	≤ 3 sec. per pack
	Automatic loading	200 pack/hour
	Unloading	~ 10 sec. per movement (up to 8 packs)
<b>Accepted packs</b>	Minimum size	12 x 10 x 40 mm / 0.47 x 0.39 x 1.57 in
	Maximum size	180 x 120 x 300 mm / 7.08 x 4.72 x 11.81 in
	Minimum diameter	40 mm / 1.57 in
	Maximum diameter	180 mm / 7.08 in
	Minimum weight	5 g / 0.1764 oz
	Maximum weight	1,200 g / 2 lb 10.33 oz per pack (maximum weight on gripper: 2.500 g / 5 lb 8.185 oz)
<b>Barcode</b>	1D and 2D	
<b>Voltage</b>	100-240V ± 10% 50/60 Hz	
<b>Power consumption</b>	During movement	0.39 kW/h (excluding internal lighting system)
	In stand by	0.24 kW/h (excluding internal lighting system)
	Emergency mode	0.19 kW/h
<b>Safety</b>	Dual computer system, UPS, data backup, remote monitoring, rapid replacement of the gripper and automatic alignment of packs on the shelves.	



L - Shape



U - Shape



Clover 51 Ltd  
sales@clover51.co.uk  
tel: 028 90 999 230

